

Climate Emergency Update's

June 2022- June 2023



Climate Emergency Task Group meetings moved to quarterly from mid-2022 and have continued to meet, some of the topics covered include;

with a number of projects being completed by s including;

- Councillor lead projects
 - takeaway containers, and the willingness & practicality of changing these to more environmentally friendly products. While options are available, they are prohibitively expensive at the current time, although it appears there is a will to consider them in the future.
 - Rewilding projects in Bamber Bridge and Lostock Hall
 - Planning Policy
- Review of Strategies and consultations
 - The neighbourhood's strategy
 - The Draft Local plan
 - Biodiversity Strategy

Community Groups, officers have been working with a variety of community groups to progress work on carbon reduction, improved biodiversity, some of the projects include;

- 7 rewilding areas in Bamber Bridge and Lostock Hall through the Hub groups as a trial with suggestions for more next year.
- An article on Climate and biodiversity included in the Eastern Parishes newsletter.
- Broadfield Community Garden and Worden pond plants funded by Leyland and Farington Hub.
- Collaborative working with Penwortham Town Council
- Officers attended Penwortham Town Council first Climate Action Group meeting
- Papermaking and climate emergency engagement sessions with church youth group and craft group in Penwortham
- Working with Community Payback – Balsam and Ragwort removal as part of our invasive species management
- Bamber Bridge - Bug hotel project
- Bamber Bridge - Yellow Rattle meadow project funding application submitted
- Climate Change talk – Food for Thought Preston Group
- BB & LH – Funding secured for wildflower plants to create a new meadow at The Holme. Habitat improvement works carried out on the ditch at Holland House. Installing planters at two locations in Bamber Bridge, School planter project – planters, soil, gardening tools and seeds given to primary schools in the Hub area
- L & F - Farington Lodges improvement works underway, plants ordered for pond at Worden Park
- Penwortham - Guardians of Nature have taken on responsibility for the Pumpkin Patch and have held their first volunteer day aided by the Youth Council.
- Edge Hill University Climate Event in May.
- Liaising with Natural England about involving our community groups in their Community Nature projects and Social Prescribing engagement activities
- Presentation to Lancashire Badger Group,
- Guardians of Nature – pond survey training,
- Lancashire Business Park – biodiversity improvement advice
- White Ribbon Garden – Guardians of Nature to take on the general maintenance of the garden with support from SRBC, Progress and The Refuge
- BB & LH – Beehive planters in Bamber Bridge, meadow creation trial at The Holme
- Penwortham – Active travel project – Wheel Walk Penwortham,
- Middleforth Community Garden and work on the Pumpkin Patch

Campaigns, officers have been involved in a several campaigns around the air quality, climate emergency and biodiversity workstreams;

- Refill Campaign to reduce the consumption of single use plastics by encouraging businesses and public buildings to provide opportunities for refilling personal water bottles for free. Delayed by Refill, they then wanted to charge us £3000+ per year. Decision to look at running a similar SR scheme made, Comms working on our own internal branding starting with the new water fountain in reception.
- Consultation undertaken for the revocation of Penwortham Air Quality Management Area.
- Don't Let Go – South Ribble has formally signed up to the Marine Conservation Society campaign. Details and guidelines on our website <https://southribble.gov.uk/article/2478/Balloons-and-sky-lanterns>
- Cost of Living Marketplace attended with Environmental Health Housing
- Bra recycling banks – suggested by Longton Eco Group, bra banks have now been installed at the Civic Centre, all our leisure centres, Wade Hall Community Centre (Progress Housing) and Priory lane Community Centre (Penwortham Town Council)

Consultations

- Planning - Comments submitted on the draft Local Plan.
- Comments provided on a several large planning applications
- Edge Hill university Climate Day May 2023, SRBC one of several authorities who attended and provided assistance to get representation from community groups to be present. (The majority in attendance came from South Ribble)

Schools – officers have continued to work with schools from across the borough offering advice and assistance where required, including them within the tree planting work and involving them within consultations on action plans etc.

- Visits and work with Cop Lane Primary on developing their school grounds,
- Lever House Primary's Environment Day,
- Lostock Hall Academy – tree planting scheme,
- Lostock Hall Academy advice on developing their wildlife area,
- Cuerden Church School borrowed litter picking kit for the Big Help Out.

Biodiversity Strategy and Action Plan

- The Strategy was adopted at Full Council in July 2022
- Lancaster University Internships – 2 interns completed GIS mapping of habitats and species in South Ribble to create the baseline data for the Biodiversity Action Plan.
- Consultation events held with Neighbourhoods.
- Consultation events with hubs and councillors.
- Schools Biodiversity Competition as part of the consultation – Broad Oak Primary school won the Schools Biodiversity Competition with Northbrook Primary Academy and Lostock Hall Academy as runners up
- Members Briefing – Biodiversity was held on the 4th October and follow up linking work with schools and U3A groups is under discussion
- Working with Natural England on the Local Nature Recovery Strategy.
- Consultation finished at the end of June, with 161 responses from residents aged 9 – 84 and c40 comments from the Facebook posts.

Social media and comms A full communication plan was developed at the beginning of the year, although there has been some restrictions on messages being released.

- Complete refresh of SRBC website with regard to the three areas of work.
- Rewilding information page added to the website
- Urban meadows page updated
- Dnata travel – advice of development of their grounds.
- James Fisher Nuclear – team volunteered for a balsam bashing session at Moss Side Rugby Pitches.
- Officers attended New Business Energy Support Scheme marketplace

Tree planting schemes in pursuit of the corporate goal to plant a tree for every resident (110,000, over four years): planned for winter 22/23 to deliver the 27,000 trees promised in the Corporate Strategy.

- Three resident tree giveaways completed
- 28,586 trees planted in 22/23.
- 139,381 in total over 4 years
- Work progressing to identify sites for future planting.

Training, officers have attended a number of training events to help progress various aspects of the three areas of work. In addition, officers have provided advice and training to others. These include

- Carbon Literacy Training, now completed this is to be rolled out across the Council
- Retro fit training – how to make existing properties more carbon neutral.
- UK100 Local Climate Engagement Training course completed – invaluable for biodiversity consultation work

Grant funding: several grant applications have been submitted over the year along with continual progress on previous successful applications.

- Decarbonisation works are progress at the four leisure centre's and Civic Centre progressing with the installation of air source heat pumps have been delivered, solar panel and LED lighting
- EV chargers
 - 19 chargers are installed, awaiting for DNO connection
 - A further £154,000 secured for an additional 21 EV chargers (42 sockets) during 2023/24
- £54,000 for Defra Air Quality Grant – Clean Air Crew Project.

Upcoming events

- Balsam Bashing – 3rd – 9th July 2023 at sites along the River Lostock
- Climate Emergency event at Civic Centre 29th and 30th September
- Clean Air Crew Launch event 29th September 2023

Four Yearly Summary of Works Completed.

Strategies and Plans

- Council approval of the Climate Emergency Strategy, 2020
- Public consultation on the development of the Climate Emergency Action Plan
- Council approval of the Climate Emergency Action Plan in 2021
- Council approval of the Biodiversity Strategy in 2022
- Public consultation commenced in 2023 in preparation for presentation of the Biodiversity Action Plan to full Council in July 2023
- Annual submission of the air quality ASR (annual status report) to Defra.
- South Ribble Retrofit Action Plan 2023
- Annual greenhouse Gas report Update to Full Council

Active Travel

- Walking and cycling routes
<https://www.southribble.gov.uk/walking>
- Bikeability training for school children
- Installed several kilometres of new pathways and cycleways to encourage active transport and reduce reliance on carbon fuelled transport
- Provided secure cycle storage facilities at the Civic Centre and Moss Side depot, along with improved changing facilities at the Civic Centre, to encourage staff to cycle or run to work
- Provided Community Dr Bike bicycle repair projects to encourage active transport
- Encouraged our employees to use active transport, as an employer, we offer initiatives such as the cycle to work scheme, free use of pool electric bikes and 1-1 training to build commuting confidence.
- Active Health are working with schools to create bespoke Active Travel Programmes.

FREE BIKE REPAIRS AND SERVICE

DROP-INS WELCOME

Tuesday 18th April, 2pm - 5pm
Tesco Superstore, Liverpool Road, Penwortham

Advance bookings taken by email to:
jonathan.garston@southribble.gov.uk
Please state 'Tesco Dr Bike' when booking

South Ribble Borough Council

Biodiversity

- The Tree for Every Resident Project has resulted in more than 140,000 trees being planted across South Ribble on our own land, in school groups and on private land.
- To date we have given away 27,000 free trees to residents as part of our Free Tree Giveaways <https://www.southribble.gov.uk/treegiveaways>

- We are working with schools to develop their grounds and have gift trees to them as part of the Queen's Green Canopy project and our own Tree for Every Resident project
- The Council's Tree Team retain tree stumps as monoliths, also known as 'wildlife sticks' as oppose to felling trees to ground level where appropriate, taking into account proximity to paths, benches and street furniture.
- Created a new woodland on land bought by South Ribble – 8624 trees planted



Carbon reduction measures in our own buildings and developments

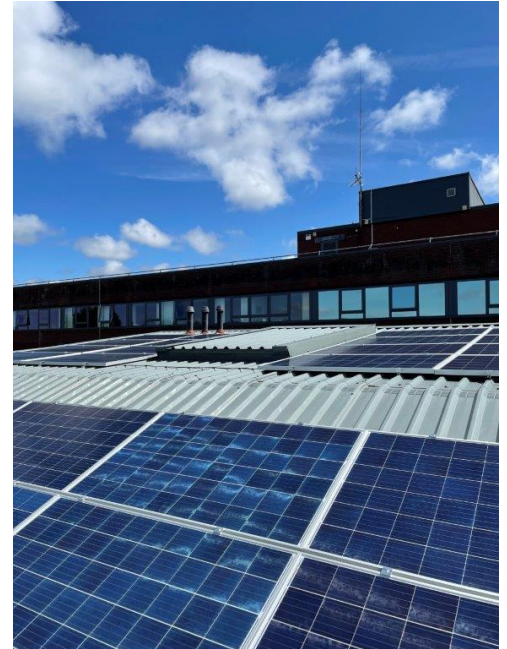
- McKenzie Arms - Incorporated carbon reduction and energy efficiency measures into our own new developments, such as the new McKenzie Arms development – including solar panels, LED lighting and mechanical heat ventilation units – as well as secure cycle storage facilities and EV charging points.

Case Study on UK100 - [Energy-efficient, high quality, affordable rented homes in South Ribble](#)

- Installed an air source heat pump as part of the redesign of the Coach House at Hurst Grange Park.
- Secured £145,000 grant funding to install further solar panels to the Civic Centre, along with installation of LED lighting, a solar panel battery pack system, energy efficient hot water heaters and a new building management system to improve energy efficiency
- Undertaken energy audits at six of the biggest energy using buildings in our estate – the Civic Centre, Moss Side depot, Leyland leisure Centre, Penwortham Leisure Centre, Bamber Bridge Leisure centre and the Tennis Centre. The findings of these audits will inform future investment to improve energy efficiency and move to decarbonise energy production on site.



- Secured £223,000 grant funding to produce decarbonisation plans for the Council estate, identifying the works and costs of making them carbon neutral by 2030
- Securing almost £5 million grant funding to decarbonise the Council's largest energy using buildings between April 2022 – March 2023, replacing the use of gas as a heating source at these buildings and improving our use of renewable energy
- We continue to implement more carbon reduction measures within council buildings, such as solar panels, LED lighting, and improved building management systems to make our buildings energy efficient.
- Working to improve the carbon emissions of Council run events
- Annual reporting of the Council's own annual greenhouse gas emissions



Carbon reduction measures across the wider Borough

- We have been working to ensure all tenanted and rented properties in the Borough reach the minimum energy efficiency standards (MEES) and have an EPC rating no lower than E, by signposting funding opportunities and taking enforcement action on landlords where required. This is improving energy efficiency, reducing heating costs, improving public health and improving living conditions. (£45,004 grant funding)
- South Ribble Business Energy Efficiency (BEE) Scheme, helping businesses to carry out energy audits and grant funding to purchase equipment to reduce energy usage.

Community Hubs

Our 5 Community Hubs have completed a number of projects including

- Pop up shops for school uniform and winter coat exchange
- Practical support funding of c£50,000 for local facilities and volunteer groups hosting social isolation cafes / welcoming warm spaces where people can walk to and make friends find out about what is happening locally to them
- Supporting community food banks to transfer to a Community Shop / Pantry system, utilising goods from Fair Share, local supermarkets and reducing food waste locally
- Supporting local In Bloom schemes who are championing rainwater harvesting and plant shares and increasing biodiversity.
- Winter Warmth Scheme to all residents in the Eastern Parishes with advice and basic supplies such as radiator keys, socks and hot water bottles to promote keeping warm whilst saving on electricity bills.
- Supporting the establishments of the Pumpkin Patch and Broadfield Community Gardens
- A new Active Penwortham Project
- Meadow creation and rewilding trials Bamber Bridge and Lostock Hall
- Planters for schools and along Station Road
- Improvement works at Farington Lodges
- Funding of pond plants for the new pond at Worden Park
- Bike repair workshops and pop up shops
- Cost of Living event / Warm spaces

WHEEL, WALK, PENWORTHAM.

A CALENDAR OF FREE ACTIVE TRAVEL EVENTS FOR PENWORTHAM & BEYOND
VISIT WWW.SOUTHRIBBLE.GOV.UK/CYCLING FOR BOOKING INFORMATION

Activity	Venue/Starting Point	Date & Time
8-Mile Guided Ride Penwortham Tracks & Trails	Vernon Carus Sports Club	7th March, 1pm
Bike Donation Day	Civic Centre, Leyland	14th March, 2pm-5pm
Higher Penwortham Heritage Trail Guided Walk	Hurst Grange Car Park, Hill Road	21st March, 11am
Bike Donation Day	Walby Grove Sports Hub	20th April, 2pm-5pm
Dr Bike Free Bike Servicing	Penwortham Town Council, Kingsfold Drive	25th April, 10am - 4pm
Tour of the Mosses Guided Ride	St Teresa's Parish Centre	2nd May, 10am
Preston Guild Wheel Guided Ride	Penwortham Holme West Allotments	8th May, 10am
Family Guided Ride Penwortham Tracks & Trails	Tesco Store, Liverpool Road	26th May
Dr Bike Free Bike Servicing	Tesco Store, Liverpool Road	26th May
Penwortham Gala Dr Bike, Guided Rides, Cycle Obstacle Course	Penwortham Gala Hurst Grange Park	6th June
Guided Walk Lower Penwortham Heritage Walk	Kingsfold Library, Hawksbury Drive	13th June
Cycle Maintenance Course	Penwortham Town Council, Kingsfold Drive	13th, 20th, 27th June
Tour of the Mosses Guided Ride	St Teresa's Parish Centre	23rd June
Pop-Up Bike Shop Low Cost Bikes and Kit	Penwortham Town Council, Kingsfold Drive	12th July

Suitable for all abilities

USE YOUR PHONE TO SCAN ME AND GO STRAIGHT TO OUR WEBSITE





WHAT WE ARE DOING

FRUIT TREES
Following extensive consultation, we plan to plant 4-6 Fruit Bearing Trees for the benefit of local residents.

NEW BENCHES
Upgrading and adding to the existing benches will offer residents the opportunity to sit, relax and unwind with nature.

COMMUNITY PLANTERS
Local residents will have the opportunity to plant a wide variety produce in the raised planting beds.

VOLUNTEERING
The community garden will afford residents the opportunity to come together to care for the site and ensure the space is maximised for the community to benefit.

RE-SURFACE THE PATH
The existing path is in a poor state of repair; the plan aim to resurface the path through the garden and improve access at either end.

JOIN OUR BROADFIELD COMMUNITY GARDEN OPEN DAY

Pop along to our open day!

- Meet some of our volunteers!
- Find out how to get involved!
- Have a go at some gardening tasks!
- See the fruit and veg that we are growing
- No experience necessary!

**THURSDAY
30 MARCH 2023
11-6PM**

Bannister Drive, Opp
Northbrook Primary,
PR25 2GB

EVERYONE WELCOME

For queries: sam.jones@southribble.gov.uk

Education and engagement

- Hosting a virtual event for World Environment Day 2021, to promote local actions and opportunities
- Sharing messages via social media posts and press
- Providing up to date information on our website.
- Started work on the South Ribble Primary Schools Dance Festival 2023 – “Recycle and Save a Tree in ‘23”
- Working with Town and Parish Councils on Climate projects
- Enabling corporate volunteering projects



Planning

- Planning applications are routinely reviewed to request where possible, air quality, noise, climate and biodiversity elements are considered.
- Increased the number of domestic dwellings provided with electric vehicle (EV) charging points (every new dwelling to be installed with an EV charger and 10% of communal spaces)
- Increased the number commercial premises providing EV charging points for staff and customers
- Increased number of secure cycle storage facilities to encourage active transport within the Borough
- The Task Group and officers have each submitted responses to the central Lancashire local plan consultation

EV charging points

- Installed free public electric vehicle charging points at the Civic Centre
- Worked with partners to provide 4 additional EV charging point sites at Leyland, Bamber Bridge, Lostock Hall and Penwortham - £106,000 grant funding

- Through the use of government funding, we are planning to install at least another 57 electric vehicle charging bays throughout the Borough on our way to a target of 200 EV points by 2030.



Procurement

- When we look to purchase products, the green agenda is always in our thoughts - for example, consideration of where the products are coming from in order to reduce transport miles
- As an organisation we also seek to reduce our purchase and use of high energy commodities, for example single use plastics which we have already committed to eliminating the use of by 2025.
- The Council purchases recycled paper

Investment & Skills

- Biodiversity suggestions are being included in advice to businesses on delivering social value in South Ribble
- Volunteering opportunities are being arranged for local businesses to assist with environmental projects such as balsam bashing and tree planting
- Working with the Chamber Low Carbon and Making Carbon Work programmes to maximise the number of businesses engaging with energy use audits to reduce their carbon footprint
- A new South Ribble business support scheme is being developed to assist businesses to install energy use reduction measures

Business Energy Efficiency (BEE)

The South Ribble BEE scheme offers

- Access to fully funded energy audits for your business
- Grant support up to £2,000 to install energy saving equipment

See www.businessinsouthribble.com/srbcbee for full details

Email: businessgrants@southribble.gov.uk

Support to reduce your energy bills and carbon footprint



Reduced reliance on conventional fuel

- The last few years have accelerated our investment into technology to enable remote working where possible which has allowed our response to the pandemic and our vital services to continue. This has reduced the

corporate mileage, and the miles being driven by employees.

- To encourage our employees to use active transport, as an employer, we offer initiatives such as the cycle to work scheme, plus we have installed Electric Vehicle Charging points at the Civic Centre (as well as other locations in the borough) to encourage the use of electric vehicles.
- Construction of secure cycle shelters at the Civic Centre and Moss Side depot, along with changing facilities at the Civic Centre, to encourage cycling to work
- We have a rolling programme to change our Council fleet over to electric vehicles to help reduce emissions
- Electric vehicle used on Worden Park by staff emptying bins and transporting tools and equipment across the Park.
- Battery operated machinery (strimmers, leaf blowers etc.) are now in use by Gardeners on Worden Park Formal Gardens, with additional items being researched for use across the Borough.
- The Council is in the process of procuring battery powered chainsaws, hedge cutters and pole saws to reduce our usage of petrol-powered hand tools.
- The tree team will look to replace diesel powered woodchippers with Stage V Compliant petrol-powered models.
- Visits conducted at garages, garden centres and hardware store across the Borough to ensure businesses are selling Ready to Burn compliant products

Waste

- Signed up to the Marine Conservation Society 'Don't Let Go' campaign
- We have started to reduce our use of Single Use Plastics, with a commitment to eliminate them by 2025
- Installed recycling points at the Civic Centre and Moss Side to encourage staff recycling of paper and plastic.
- Reduction in paper use - The Council has invested heavily in technology to provide officers and elected members with tablets and laptops as an alternative to using paper at meetings and during site visits
- Elected members are using Modgov, an electronic alternative to the use of paper agenda and minutes for meetings
- Officer and elected member inductions are done electronically to avoid the use of paper
- Bra banks installed at Civic Centre, all 4 SR leisure centres, and 2 community centres
- 'Reduce, Reuse, Recycle' campaign to promote, encourage and increase recycling and reduction in single use plastics



Retrofit / Cost of Living Crisis

- We have produced a Retrofit Action plan to target carbon reduction from dwellings in South Ribble as they account for 49% of our CO₂e emissions.
- Grant funding has been secured to deliver the following carbon reduction and fuel poverty projects
 - MEES – Audit of privately rented properties with EPC bands rating below an E
 - ECO4 – For low income and vulnerable households
 - LAD2 – administered by CHiL – low income properties with an EPC banding of E - G
 - HUG – Energy efficiency upgrades and low carbon heating for low income households or those in receipt of benefits without gas central heating.
 - Affordable Warmth Scheme – LCC funding for low income households with additional vulnerabilities
 - Household Support Fund – for those in receipt of Disabilities facilities Grants